

# FOCUS ON REAL DESIGN AUTOMATE THE REST

**Property propagator  
for SOLIDWORKS PDM  
Professional  
installation and  
configuration guide**



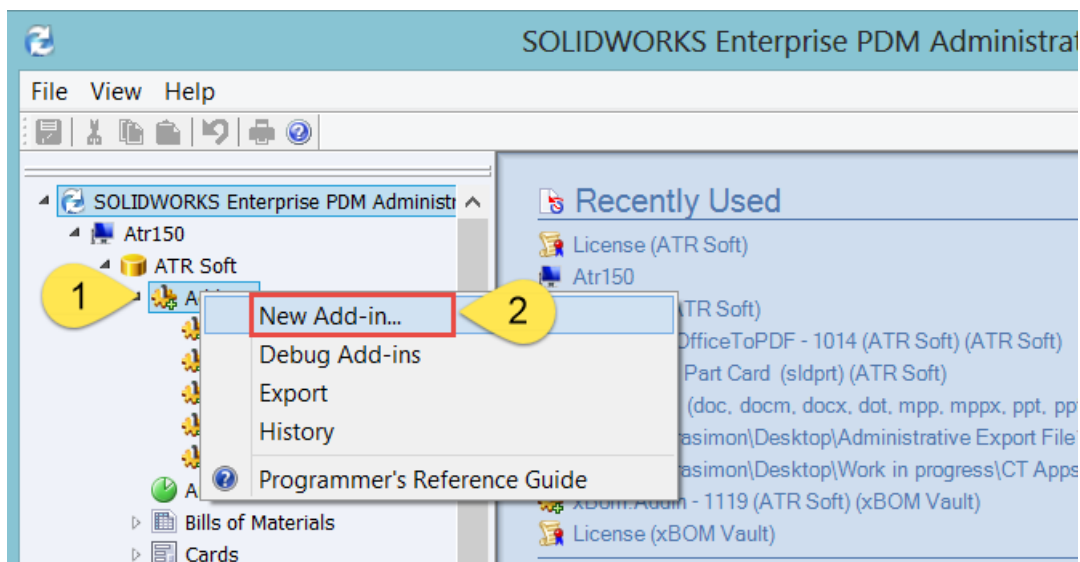
CUSTOMTOOLS

## 1. Adding the **SOLIDWORKS PDM PROFESSIONAL** Property propagator to the **SOLIDWORKS PDM PROFESSIONAL** Add-in

Open the SOLIDWORKS Enterprise PDM Administration.

From your SOLIDWORKS PDM PROFESSIONAL Vault (e.g. ATR Soft)

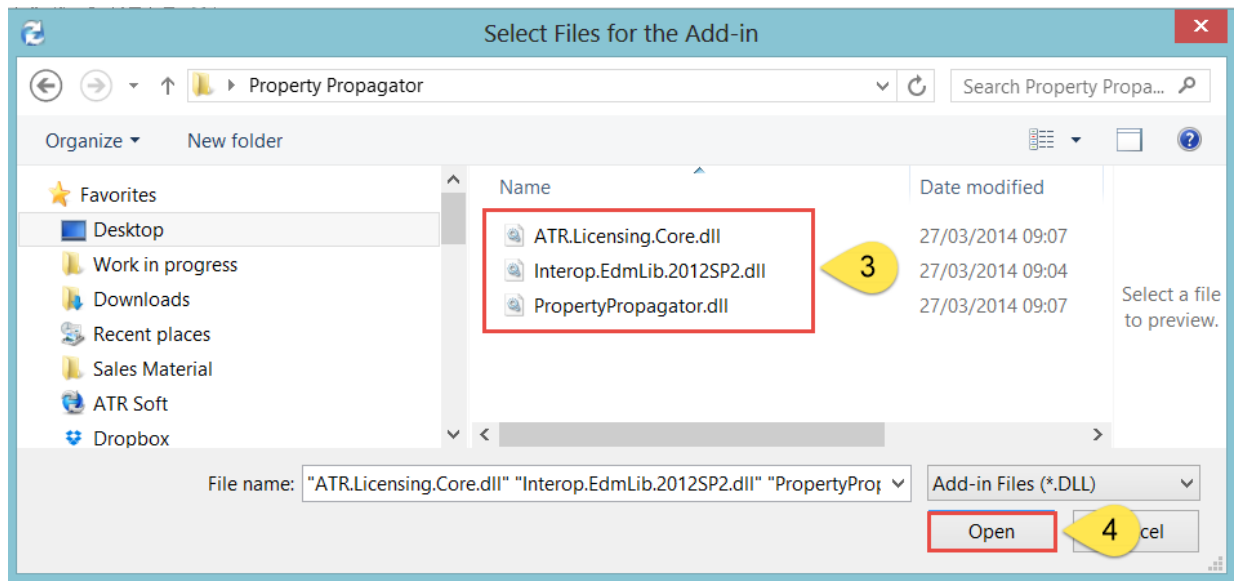
1. Right click on **Add-ins**.
2. Select New **Add-in** to create the new add in.



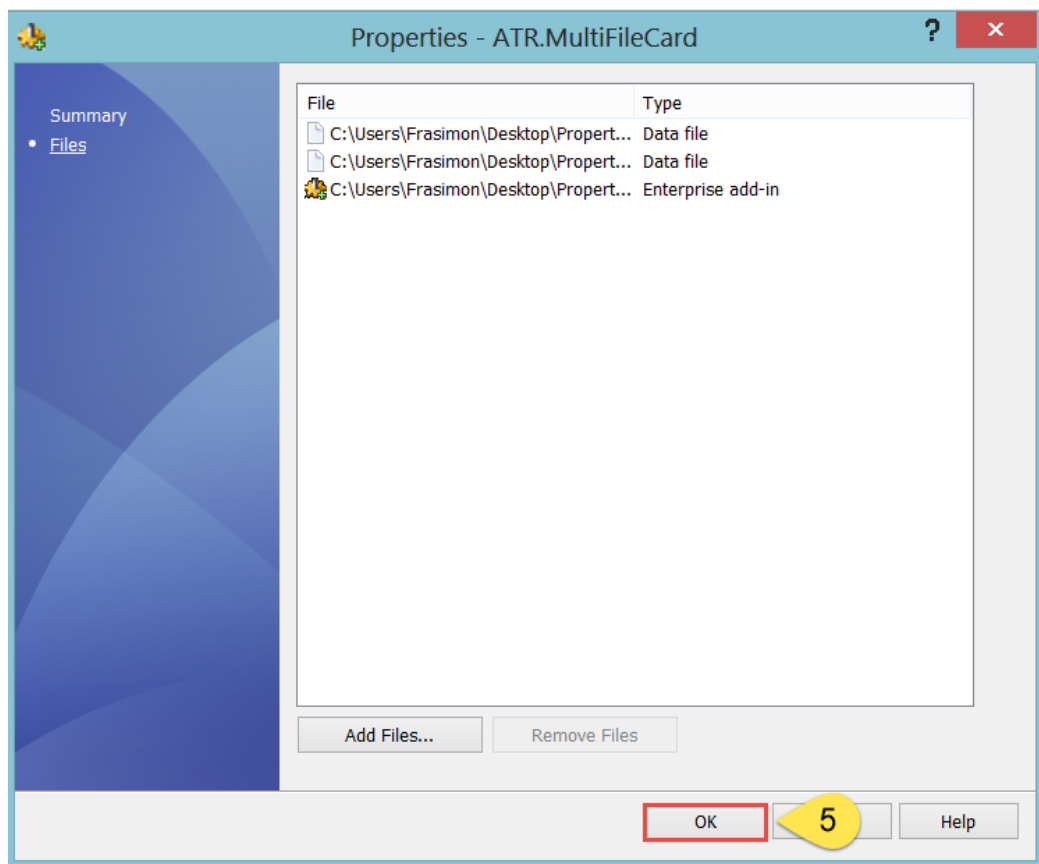
3. Select the 3 dll files (ATR.Licensing.Core.dll – Interop.EdmLib.2012SP2.dll – PropertyPropagator.dll) used by the **SOLIDWORKS PDM PROFESSIONAL** Property propagator add in.
4. Click **Open**, to add the files to the **SOLIDWORKS PDM PROFESSIONAL** Property propagator add in.



CUSTOMTOOLS



5. Click **OK** from the Properties – ATR.MultiFileCard dialog to create the **SOLIDWORKS PDM PROFESSIONAL Property propagator** add in.

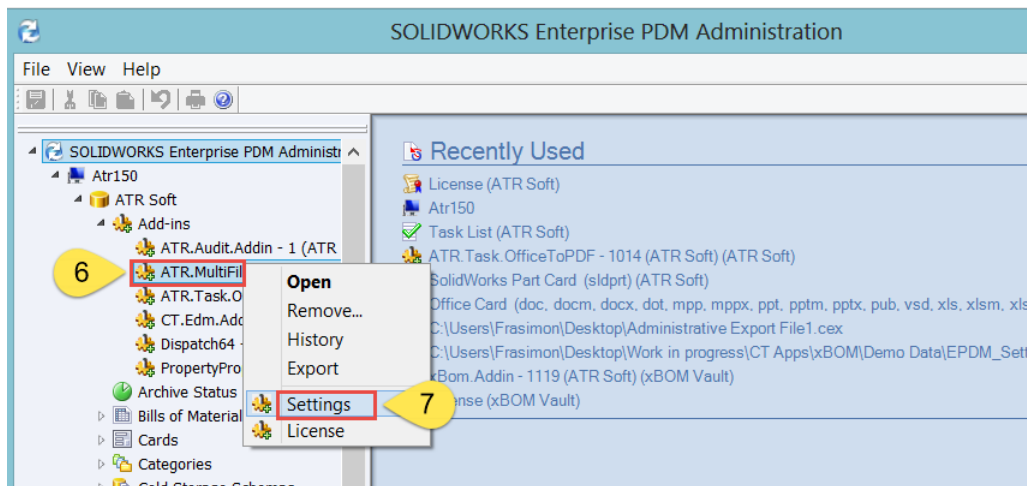




## CUSTOMTOOLS

### 2. Configuring the SOLIDWORKS PDM PROFESSIONAL Property Propagator

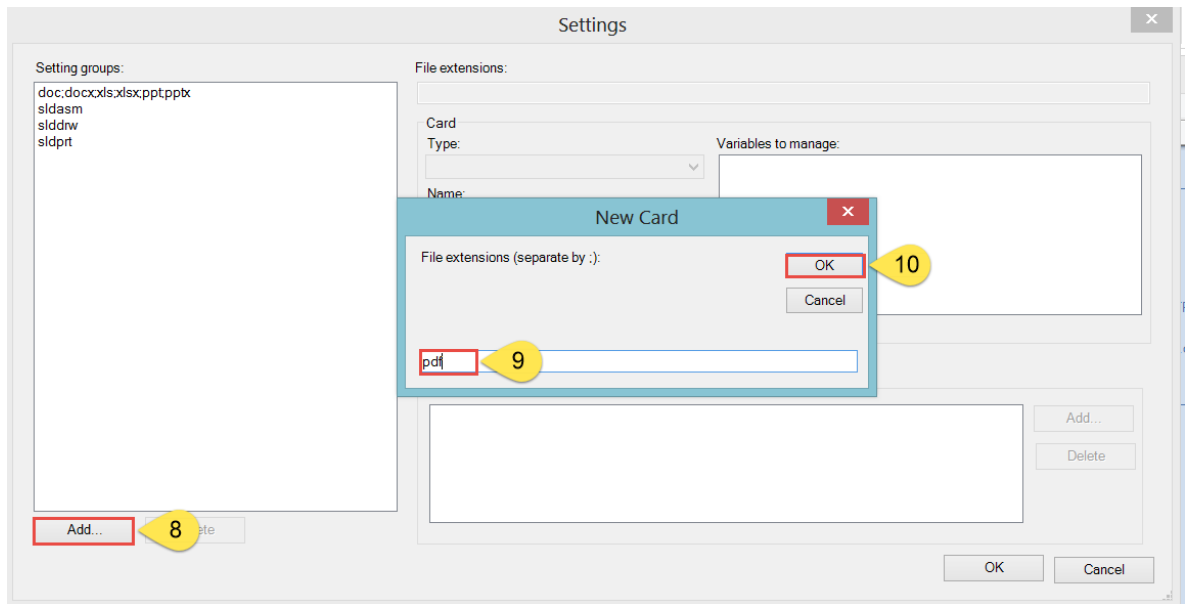
6. Right click on the **ATR.MultiFileEditor** from the list of Add-ins.
7. Click on **Settings** to define the add-in rules.



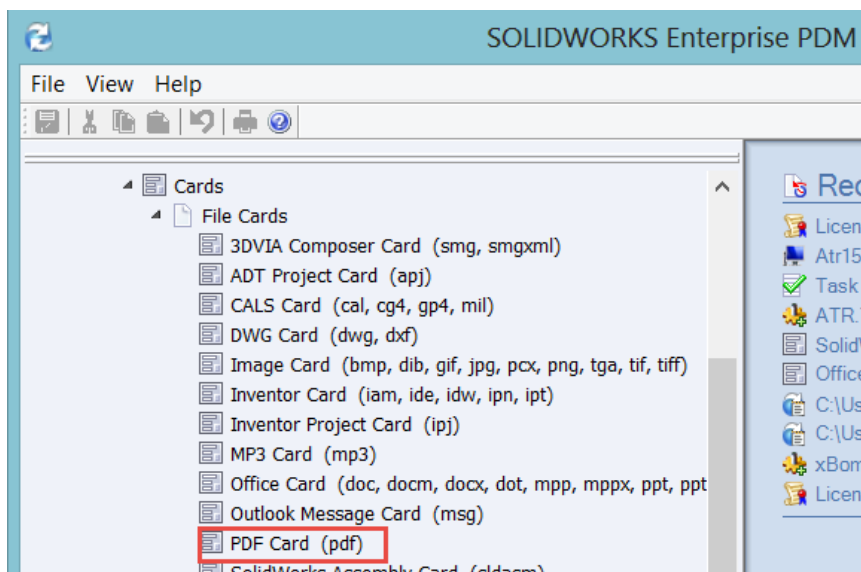
8. Click **Add** to define a new rule. Rules must be defined per SOLIDWORKS PDM PROFESSIONAL Data card. For example if you use a specific data card for Parts and a different one for Assemblies, then you must define two separate rules.
9. The **New Card** dialog appears. In the text area, type the file extension (e.g. pdf) for which you want to define the new settings. If you want to add multiple file extensions, those must be separated by a semicolon ; (e.g. doc; xls; ppt). The different file extensions associated with a rule must be associated with the same SOLIDWORKS PDM PROFESSIONAL Data card.



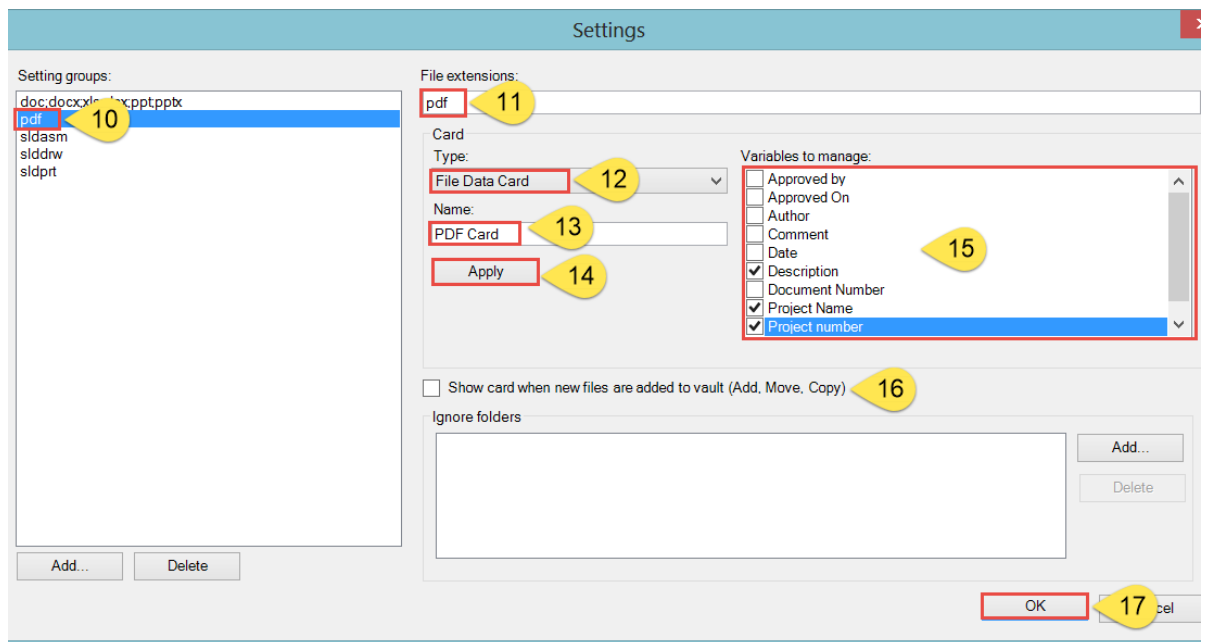
CUSTOMTOOLS



10. The new setting is added to the **Setting groups**.
11. List of the **File extensions** used by the rule.
12. Select **File Data Card from Type** to define the SOLIDWORKS PDM PROFESSIONAL data card that will be loaded once the SOLIDWORKS PDM PROFESSIONAL Add in is used.
13. Specified the name of the SOLIDWORKS PDM PROFESSIONAL Data card to be used by the group (e.g. PDF card). Please note that the name must be identical to the one defined in the **File Cards** (Under **Card** in the SOLIDWORKS Enterprise PDM Administration).



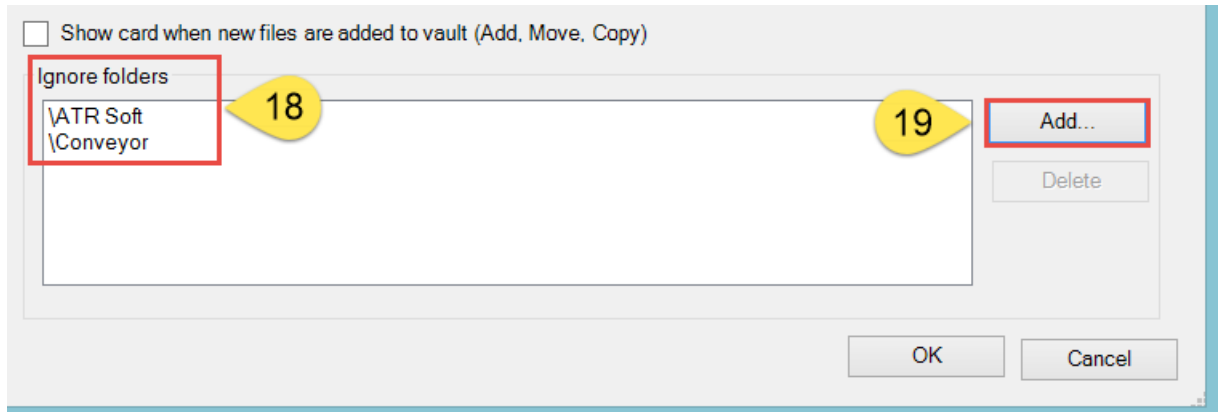
14. Click **Apply** to load all the variables from the selected data card into the **Variable to manage** section.
15. Select which SOLIDWORKS PDM PROFESSIONAL Variables can be modified when the add-in is launched (e.g. Description; Project Name; Project Number) from the Variables to manage. The SOLIDWORKS PDM PROFESSIONAL variables that have not been selected cannot be modified by the add in.  
Please note that the list of attributes available in the Variable to manage will only appear once you have clicked on **Apply** after selecting the SOLIDWORKS PDM PROFESSIONAL Datacard to be used by the rule.
16. Select the **Show card when files are added to vault (Add; Move; Copy)** check box to launch the add-in automatically when files are added, Moved or Copied to/inside the SOLIDWORKS PDM PROFESSIONAL Vault.
17. Click **OK** to save the new rule.



18. Files stored into specific folders of the SOLIDWORKS PDM PROFESSIONAL Vault can also be ignored by the add-in (e.g. \ATR Soft - \Conveyor).
19. To add new folder to the list of folders ignored by the add-in click **Add...**



## CUSTOMTOOLS



20. After clicking on **Add...** the list of folders available in your SOLIDWORKS PDM PROFESSIONAL Vault appears. Select which folder should be excluded from the add-in.
21. Click **OK** to add the selected folder to the list of **Ignore folders**.

