

**FOCUS  
ON REAL  
DESIGN  
AUTOMATE  
THE REST**

**CUSTOMTOOLS  
SEARCHING  
DOCUMENTS**



**CUSTOMTOOLS**



CUSTOMTOOLS

## Table of Contents

---

### PROPERTY MANAGEMENT ..... **ERROR! BOOKMARK NOT DEFINED.**

Introduction ..... **Error! Bookmark not defined.**

    What does it do? .....Error! Bookmark not defined.

    How does it work? .....Error! Bookmark not defined.

    How can you use it? .....Error! Bookmark not defined.

Managing group of properties ..... **Error! Bookmark not defined.**

    Adding a new group of properties .....Error! Bookmark not defined.

    Managing the group visibility .....Error! Bookmark not defined.

Adding a new property ..... **Error! Bookmark not defined.**

    Properties basic information .....Error! Bookmark not defined.

    Displaying an existing property in the CUSTOMTOOLS Properties pane..... **Error!  
Bookmark not defined.**

Combining multiple custom properties ..... **Error! Bookmark not defined.**

    Creating a combination of properties .....Error! Bookmark not defined.

    Creating a property that uses a combination of properties**Error! Bookmark not  
defined.**

Managing look up list..... **Error! Bookmark not defined.**

    Creating a lookup list .....Error! Bookmark not defined.

    Creating a property that uses a look up list .....**Error! Bookmark not defined.**

    Creating a property that uses a hierarchical look up list**Error! Bookmark not  
defined.**

    Creating a property that uses a key retrieved from a look up list**Error! Bookmark  
not defined.**



## CUSTOMTOOLS

Link a dimensions from the model to a property **Error! Bookmark not defined.**

Insert a date in a property ..... **Error! Bookmark not defined.**

Insert the mass ..... **Error! Bookmark not defined.**

Retrieve the initials of the CUSTOMTOOLS user **Error! Bookmark not defined.**

Insert a check box ..... **Error! Bookmark not defined.**

Insert a RAL Color or Color ..... **Error! Bookmark not defined.**

    Create a property that uses a RAL Color or Color ..... **Error! Bookmark not defined.**

    Customizing the RAL Color or Color ..... **Error! Bookmark not defined.**

Manage properties via dictionaries ..... **Error! Bookmark not defined.**

    Creating a dictionary ..... **Error! Bookmark not defined.**

    Creating a property that retrieve a property from a dictionary **Error! Bookmark not defined.**

Select a material from the Property ..... **Error! Bookmark not defined.**

Manage revisions data with CUSTOMTOOLS .... **Error! Bookmark not defined.**

    Customize the revision table ..... **Error! Bookmark not defined.**

    Linking a property to the revision table ..... **Error! Bookmark not defined.**

Additional Options ..... **Error! Bookmark not defined.**

Customizing your drawing template with your Custom properties ..... **Error! Bookmark not defined.**



## CUSTOMTOOLS

# Searching documents with CUSTOMTOOLS

---

## Introduction

### What does it do?

The CUSTOMTOOLS search is a powerful search engine that allows users to search for SOLIDWORKS files within the CUSTOMTOOLS database.

### How does it work?

The user can use different search criteria to search for SOLIDWORKS documents. CUSTOMTOOLS offers a free search, or allows the user to search files based on the type of SOLIDWORKS files, CUSTOMTOOLS project or property value. The user is able to define which custom properties are available in the CUSTOMTOOLS search pane.

### How can you use it?

The CUSTOMTOOLS search can be accessed from the SOLIDWORKS task pane. Multiple search criteria can be combined together to run advanced searches. The SOLIDWORKS files can be dragged and dropped from the search results into the 3D Model area.

## Searching SOLIDWORKS files that were designed before CUSTOMTOOLS

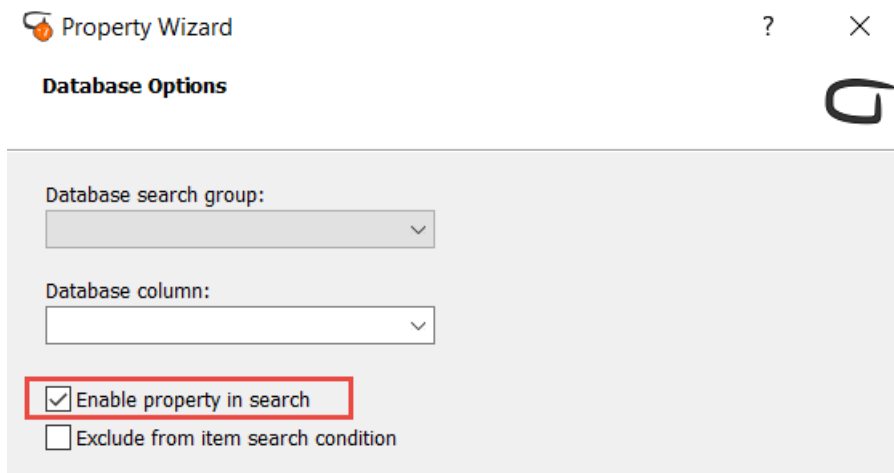
SOLIDWORKS Documents that were designed before CUSTOMTOOLS can also be searched if they have been imported into the CUSTOMTOOLS database. To import the references of SOLIDWORKS files that were designed prior to using CUSTOMTOOLS, please use the CUSTOMTOOLS **Import** functionality (*Check Chapter for more information*).



## CUSTOMTOOLS

### Adding a property to the CUSTOMTOOLS search pane

The CUSTOMTOOLS search can easily be customized with the Custom properties defined in CUSTOMTOOLS.

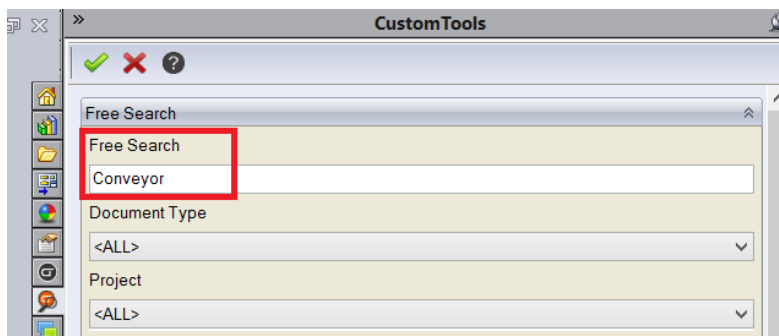


To add a property to the **CUSTOMTOOLS search pane**,

1. Open the CUSTOMTOOLS **Options**,
2. From the **Profile Options** tab, select **Custom properties**, then select **Model properties** or **Drawing properties** from the tree view,
3. Select the property that should be added to the **CUSTOMTOOLS search pane** and click **Edit**,
4. From the **Property wizard** click **Next** twice to open the **Database options** page,
5. Select the **Enable property in search** check box and click **Finish**.

### Using the CUSTOMTOOLS search

Using the free search





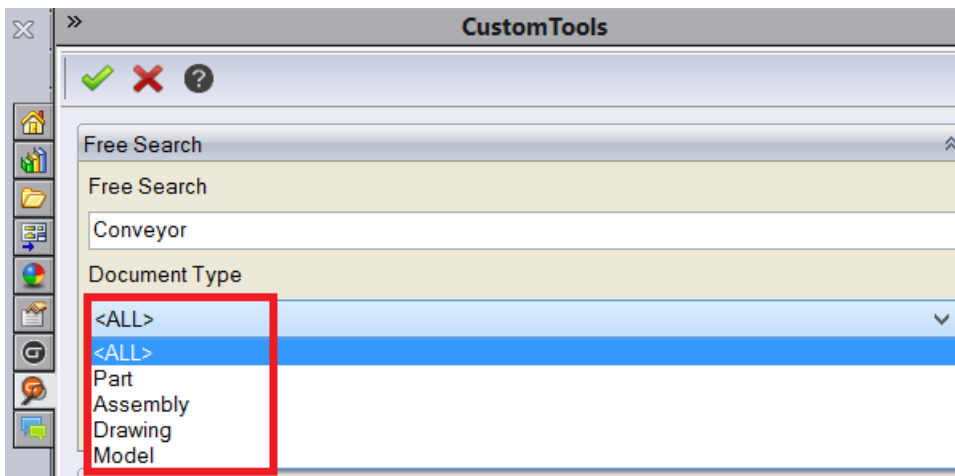
## CUSTOMTOOLS

The free search can be used to search documents based on any defined Custom properties.



**NOTE:** It is not possible to combine property values used in different custom properties in the free search.

Searching for specific SOLIDWORKS document type



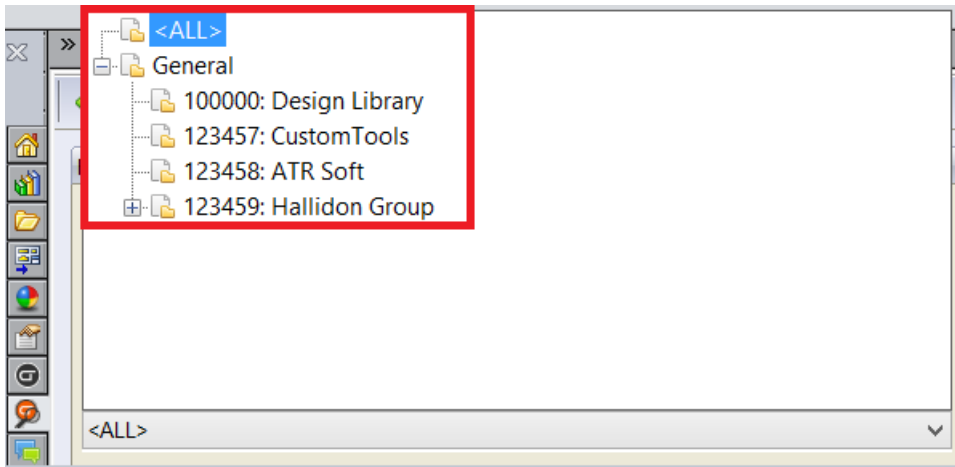
Documents can be searched based on their types. The following types of documents are available:

- Part
- Assembly
- Drawing
- Model (Part & Assembly)

Searching files based on the CUSTOMTOOLS project

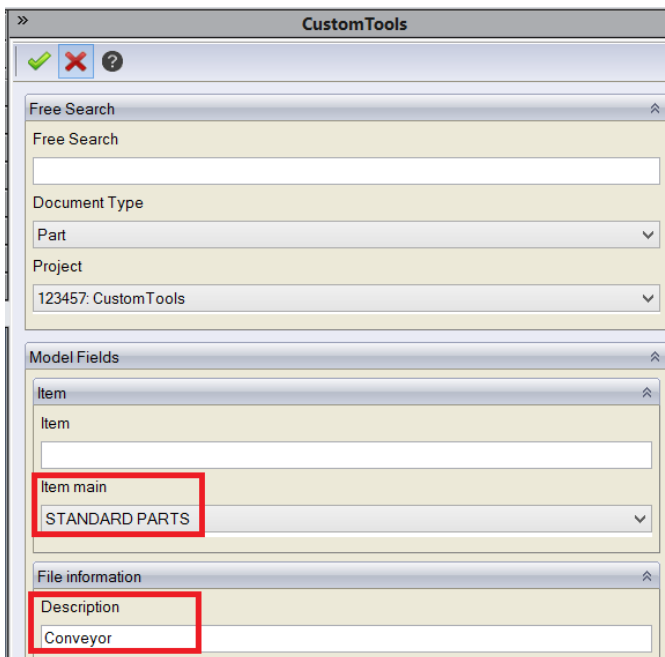


## CUSTOMTOOLS



Files can be searched within a specific CUSTOMTOOLS project.

### Searching based on a property value



Files can be searched based on property values.

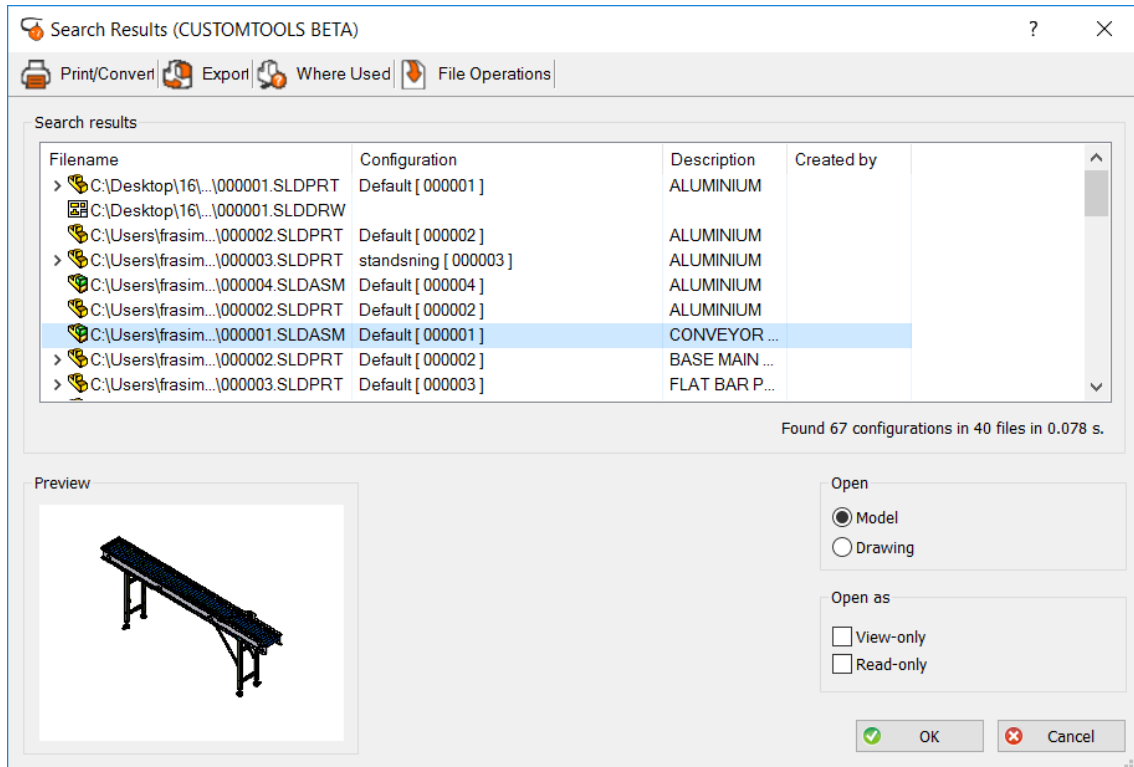


**NOTE:** Multiple Property values can be combined into the search.

Inserting parts or assemblies from the search result into the active model

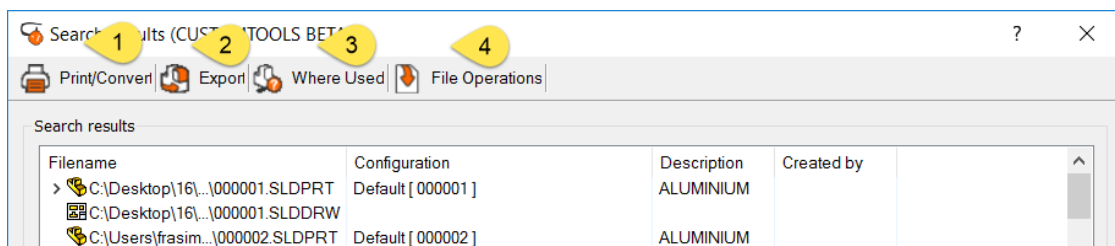


## CUSTOMTOOLS



- **To insert the selected component from the Search Results into the active 3D Model:**  
Select a part(s) or assembly(ies) and drag it to the 3D Model area.
- **Open the selected component from the Search Results in SOLIDWORKS:**  
Select the file(s) to be open and click **OK**.

### Launching other CUSTOMTOOLS functionalities from the search results



The following functionalities of CUSTOMTOOLS can be accessed from the CUSTOMTOOLS search:

1. **Print And Convert:** Opens the **Batch Operation** dialog with the selected assembly and all referred documents or the selected files from the search results.
2. **Export:** Opens the **Export** dialog (e.g. to generate an Excel report).





## CUSTOMTOOLS



**TIP:** The assembly to be printed, converted or exported to Excel does not need to be opened in SOLIDWORKS.

3. **WhereUsed:** Locate in which assembly a part/assembly is being used
4. **File Operations:**
  - a. **Delete files:** Delete the files from the CUSTOMTOOLS database and/or from the hard drive.
  - b. **Open File in SW:** Opens the selected files in SOLIDWORKS.
  - c. **Open Drawings:** Opens the drawing(s) of the selected files. If the model has more than one drawing then the **OpenDrawings** dialog opens where all the drawings are listed.
  - d. **Open in Explorer:** Locates the selected file in Windows Explorer.

